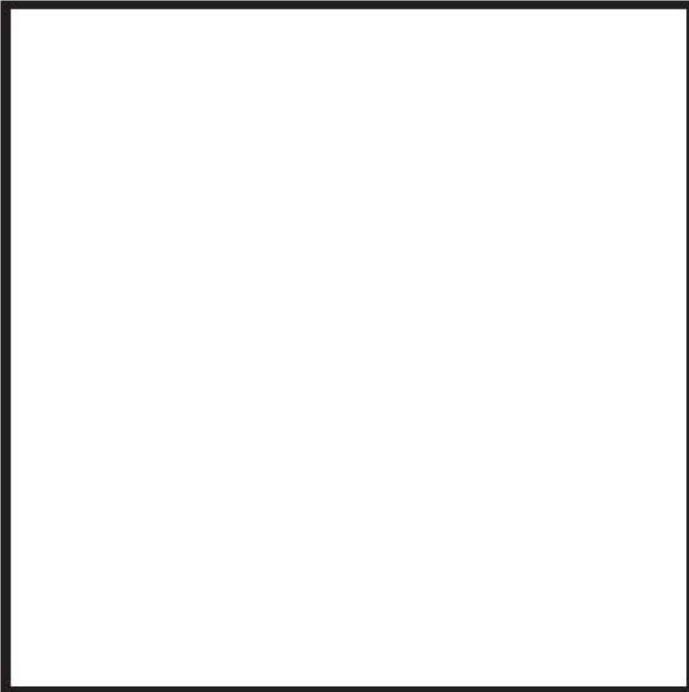
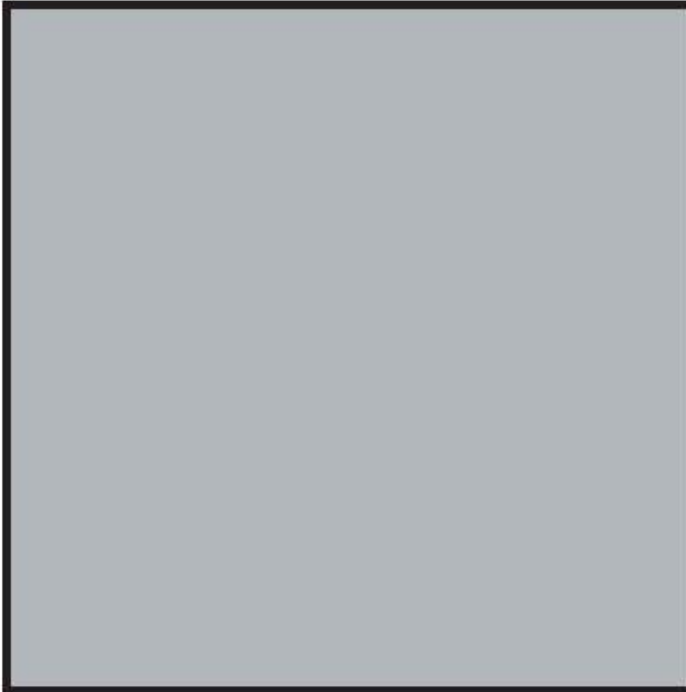


SCHEDULE OF FINISHES



1) **WHITE**
PAINT FINISH
SURROUND TO
APARTMENTS,
DUPLEX'S & RFC



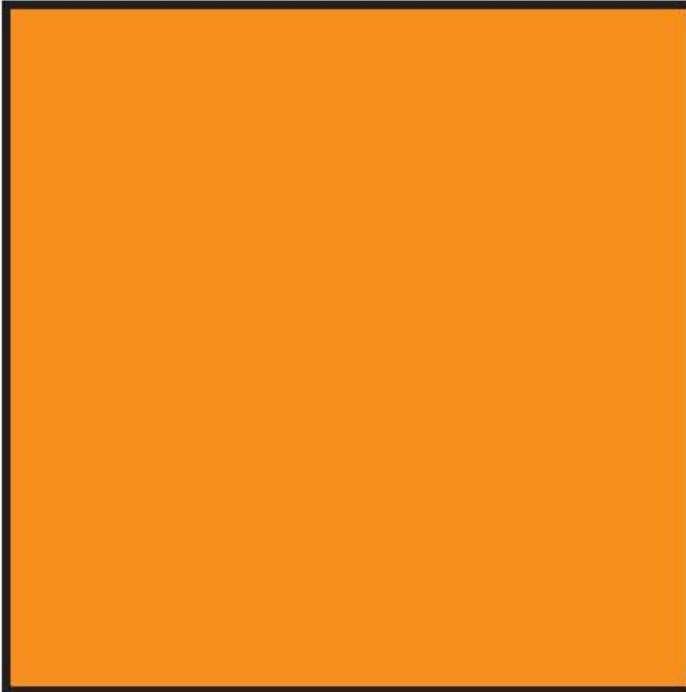
2) **LIGHT SHALE GREY**
DUPLEX, APARTMENT,
CLUBHOUSE & RFC
BROADWALLS &
BALUSTRADES



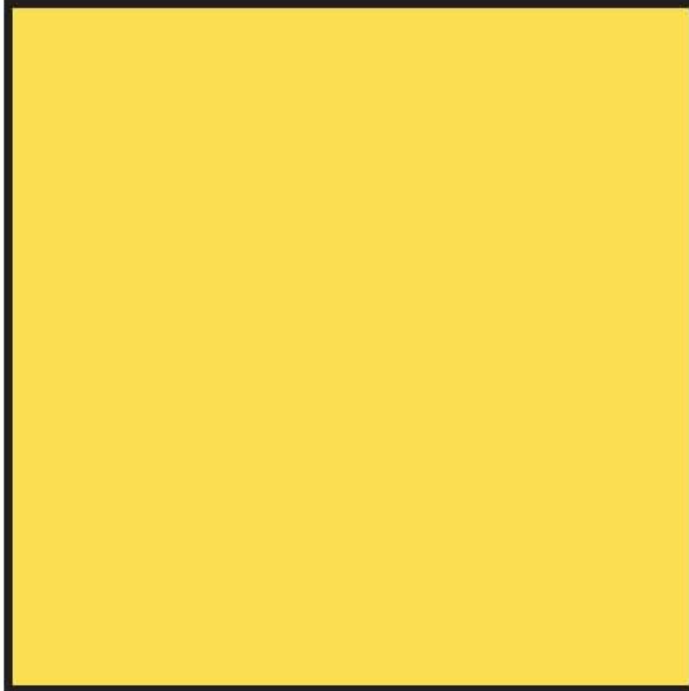
3) **WOODLAND GREY**
WINDOW FRAMES
CLIPLOK ROOF & WALLS
TO APARTMENTS, FACIAS
& 150 Ø FLATBACK
HALF ROUND GUTTERS



4) **TERRAN**
LOUVRES TO APARTMENTS



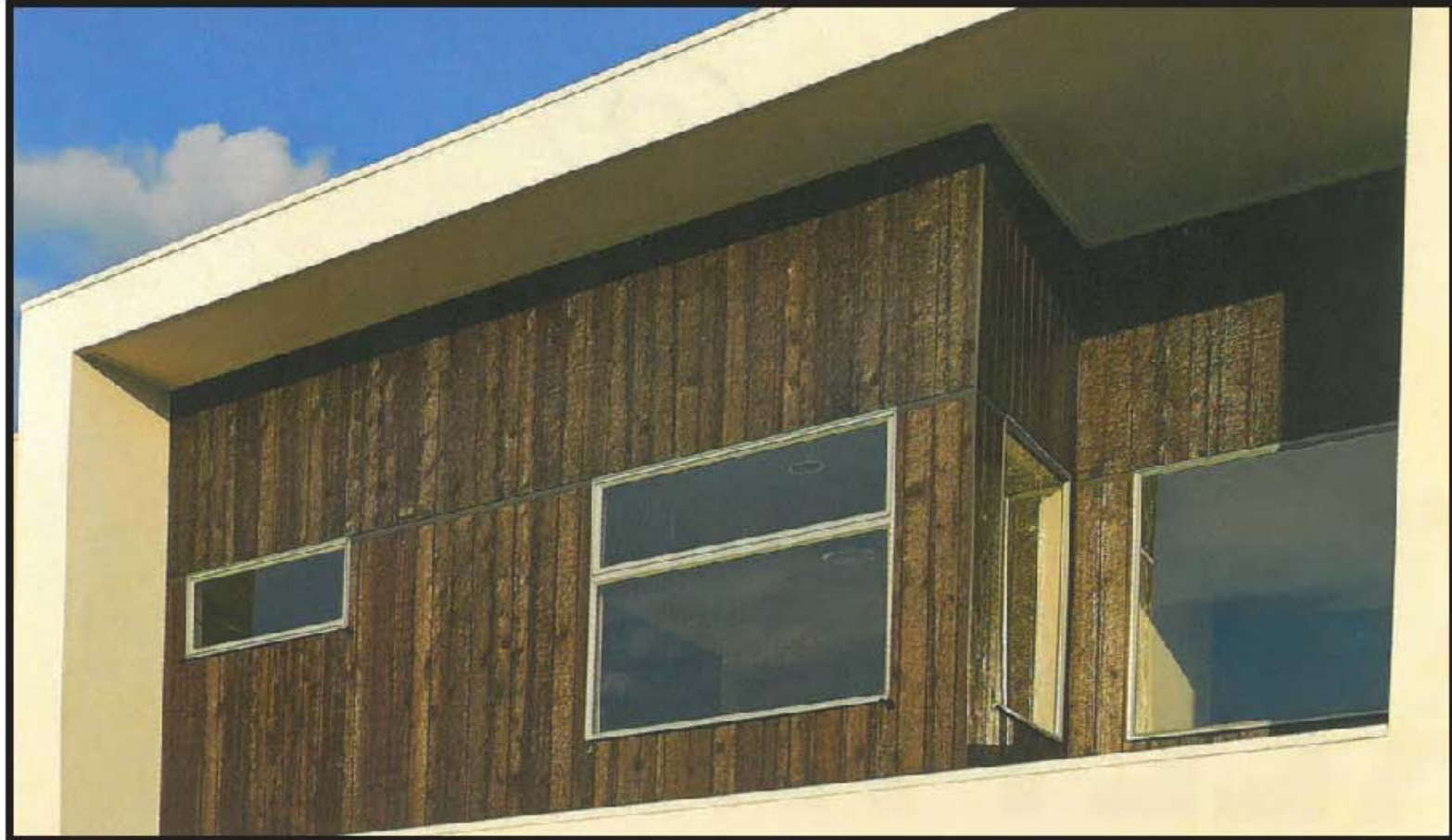
5) **ORANGE**
CLUBHOUSE AC INFILL
PANELS TO GLASS
LOUVRES & SUPPORT POLE



6) **RUSTIC YELLOW**
LOUVRES TO APARTMENTS



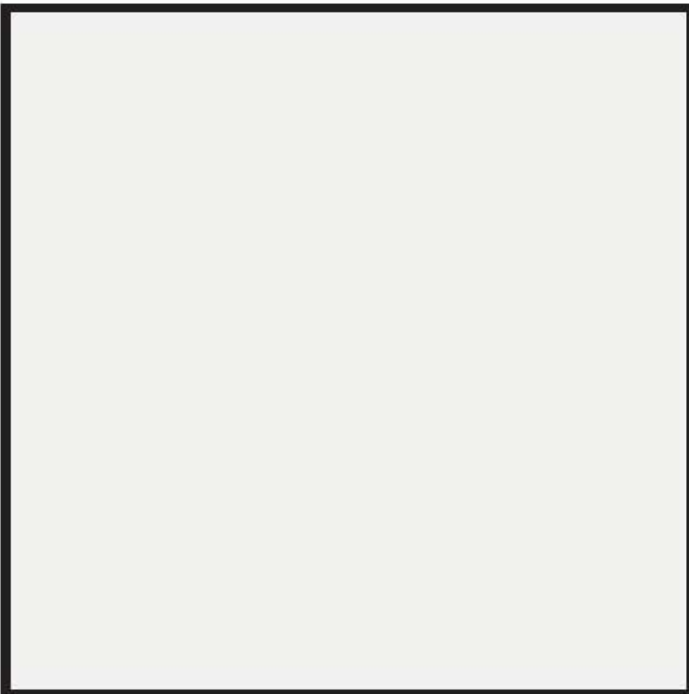
7) **EXAMPLE OF
CLIPLOK WALLING**



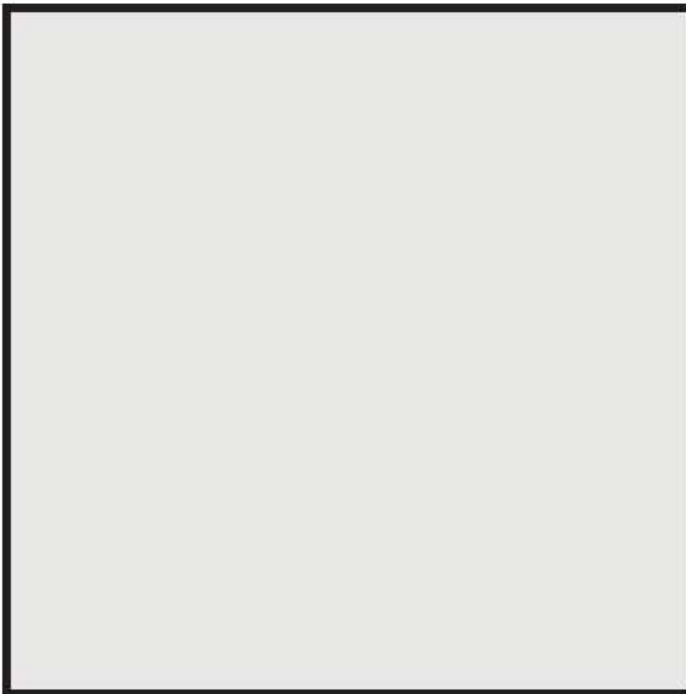
8) **WEATHER TEX NATURAL FINISH TIMBER**
(HORIZONTAL & VERTICAL WEATHERBOARD)



9) **BORAL LINEA FLAT CONCRETE ROOF TILE**
(OXIDE COLOUR THRU)



10) **WHITE HAVEN**
SUPPORTIVE CONTRAST
COLOUR



11) **SURFMIST**
SUPPORTIVE CONTRAST
COLOUR



12) **IRREGULAR
SANDSTONE**
FOR FEATURE WALLS

A	09.05.2017	DEVELOPMENT APPLICATION SET
NO.	DATE.	DETAILS.

Amendments:
Stephen Jones Associates

p. 02 9977 2240
m. 0418 866 784
e. sj@stephenjonesassociates.com
w. www.stephenjonesassociates.com

Registered Architect Gary Finn No. 5774 (NSW)
Project:
SENIORS LIVING DEVELOPMENT
LOT 1, DP 780801
WINDWARD WAY, MILTON NSW 2538

Drawing:
FINISHES SCHEDULE